



# Packet Networking Portfolio Platforms

Product and Technical Marketing

March 2020

# 3902 Service Delivery Switch

Single Port Ethernet Demarcation

**Service Aware OS - SAOS:**

- 802.1Q VLANs, Q-in-Q
- MEF EPL, EVPL & E-LAN
- IEEE 802.3ah link layer OAM
- IEEE 802.1ag Connectivity Fault Management
- ITU-T Y.1731 Performance Monitoring: Delay, Jitter, Loss
- RFC 2544 Reflector for Performance Measurement

**Packaging**

- Desktop or Wall-mount
  - Small and Lightweight
  - Dimensions - 1.12”H x 5.9”W x 5.9”D
- External AC brick Power Supply
- 0C to +40C temperature range
- Fan-less design
- Front Access to all power and data interfaces on the product for easy desktop or wall-mount scenarios

**Cost-effective yet advanced single port service delivery device**



NNI	UNI
1	1
1G	10/100/1000M
SFP	RJ-45

# 3903 Service Delivery Switch

## Resilient SMB Ethernet Service Demarcation

### Service Aware OS - SAOS:

- 802.1Q VLANs, Q-in-Q
- MEF 2.0 E-LINE, E-LAN, E-TREE Services
- ITU-T Y.1731 Performance Monitoring: Delay, Jitter, Loss
- RFC 2544/Y.1564 Performance Reflector & Generator
- IEEE 802.3ah link layer OAM
- IEEE 802.1ag Connectivity Fault Management

### AC Packaging

- Desktop or Wall-mount or rack-mount kit
- Small and Lightweight design
- Dual internal AC Power Supplies
- 0C to +40C temperature range
- Front Access to all power and data interfaces

### DC Packaging

- 1RU rack-mount
- Small and Lightweight design
- Dual internal DC Power Supplies (48V)
- 0C to +40C temperature range
- Front Access to all power and data interfaces

**Inexpensive yet advanced single port service delivery device**



NNI	UNI
2	1
1G/100M	1G/100M
SFP	SFP / RJ45



# 3903x Small NTE



Desk mount shown  
Also wall-mountable

## Small Ethernet NTE

### Service Aware OS - SAOS:

- 802.1Q VLANs, Q-in-Q
- MEF 2.0 E-LINE, E-LAN, E-TREE Services
- ITU-T Y.1731 Performance Monitoring: Delay, Jitter, Loss
- RFC 2544/Y.1564 Performance Reflector & Generator
- IEEE 802.3ah link layer OAM
- IEEE 802.1ag Connectivity Fault Management

### User-Friendly packaging

- Desktop or Wall-mount
- Small and Lightweight design
- 0C to +40C temperature range
- Front Access to all power and data interfaces

### Fanless, Passive cooling

- Silent operation

### External AC Power supply



NNI	UNI
2	1
1G/100M	1G/100M
SFP	SFP / RJ45

# 3904 Service Delivery Switch

Timing delivery for small cell backhaul

## Service Aware OS - SAOS:

- Virtual Switching Architecture
- MEF 2.0 E-LINE, E-LAN, E-TREE Services
- Flexible UNI Classification: EPL, EVPL, Hybrid
- Encapsulations: 802.1Q-in-Q, G.8032

## Stringent clocking/synchronization

- Synchronization via BITS, Synch-E or 1588v2
- External sync inputs/outputs (BITS, 10MHz, 1PPS, ToD)

## Sophisticated OAM capabilities

- ITU-T Y.1731 Performance Monitoring: Delay, Jitter, Loss
- RFC 2544/Y.1564 Performance Generator & Reflector
- IEEE 802.3ah link layer OAM
- IEEE 802.1ag Connectivity Fault Management
- IETF TWAMP Sender & Responder for L3 SLA Monitoring
- Hardware Ethernet OAM

## Redundant Dual Fixed AC or DC power supplies

## Wire-speed L2 switching with 4 Gbps fabric



NNI/UNI	UNI	Sync
2	2	External
1G/100M	1G/100M	BITS, 1pps, ToD, Freq.
SFP	SFP / RJ45	RJ45, mini coax

# 3905 Service Delivery Switch

Outdoor & unconditioned indoor locations

## Service Aware OS (SAOS):

- Virtual switching architecture
- E-LINE, E-LAN, E-Tree, and E-Access services
- Encapsulation (802.1Q-in-Q, G.8032)

## Sophisticated OAM Capabilities

- ITU-T Y.1731 performance monitoring (delay, jitter, loss)
- RFC 2544/Y.1564 performance (generator, reflector)
- IEEE 802.3ah link layer OAM
- IEEE 802.1ag Connectivity Fault Management
- IETF TWAMP sender/responder for L3 SLA monitoring
- Hardware-based Ethernet OAM

## Interface Flexibility

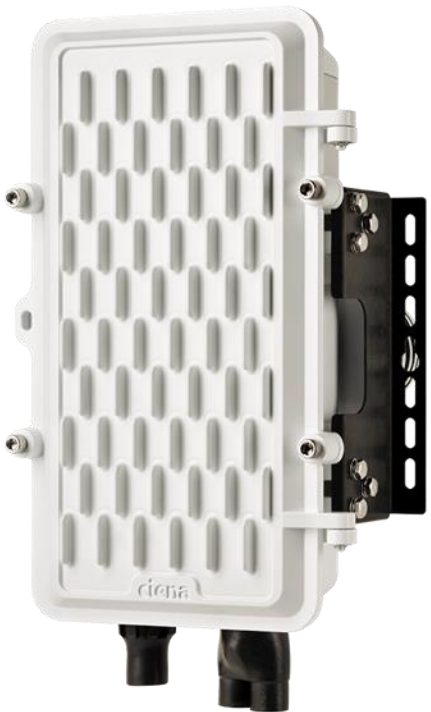
- 1G/100M Fiber handoffs or 10/100/1000Base-T Copper
- IEEE802.3at PoE+ Power Sourcing Equipment (PSE)

## Stringent synchronization via Synch-E & 1588v2

## Deployable into any location

- Environmentally sealed package
- -40C to +65C temperature range
- Built-in Fixed AC, DC or Cable-AC power supply

## WiFi-based management console port access\*



NNI	UNI
2	2
100/1000M	10/100/1000M
SFP	SFP / RJ45



# 3906 Platform

Next Gen CPE: Packet NID + NFV host



- **Low First-in Cost L2 CPE: 6xGbE**
- **Ciena SAOS advanced QoS, OAM, protection**
- **Incremental right-sized x86 NFV server (x86 Broadwell Merchant Multi-Core Compute with RAM & SSD), modules (Medium and Large options)**
- **Optional Distributed NFV Software**



Flexible Module
x86
Medium
Large

NNI/UNI	UNI	UNI
2	2	2
100M/1G	100/1G	10/100/1G
SFP	SFP/RJ-45	



# 3916 Service Delivery Switch

Small Ethernet Demarcation

GigE services via compact form factor

Service Aware OS - SAOS:

- Virtual Switching Architecture
- E-LINE and E-LAN Services
- Flexible UNI Classification: EPL, EVPL, Hybrid
- Encapsulations: 802.1Q-in-Q, G.8032, MPLS

Sophisticated OAM capabilities

- IEEE 802.3ah link layer OAM
- IEEE 802.1ag Connectivity Fault Management
- ITU-T Y.1731 Performance Monitoring: Delay, Jitter, Loss
- IETF TWAMP Sender & Responder for L3 SLA Monitoring
- RFC 2544 Generator & Reflector for Performance Measurement
- Hardware Ethernet OAM

1 RU / ~11” Width / ETSI Form Factor Note

Front access to all power, data, and management

Integrated universal AC or Integrated universal DC variants

0 to +50C temperature range

Wire-speed L2 switching with 6 Gbps fabric



NNI	UNI
2	4
1G	10/100/1000
SFP	(4) SFP (2) RJ-45





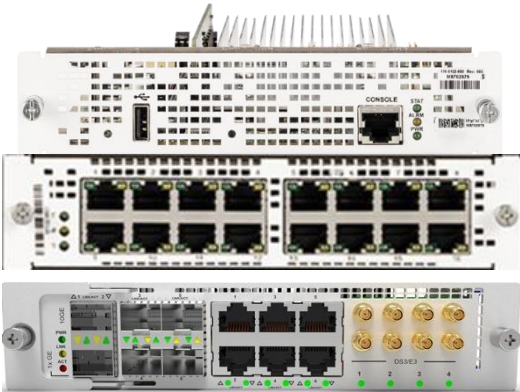
# 3926 Platform

## 10G NTE & NFV Server



### NTE Highlights

- 10GE Access - 8 Fiber ports (6 X 10GE/1GE & 2 x 1GE)
- MPLS, Advanced Ethernet, OAM & Zero Touch Provisioning
- Advanced QoS with Per-EVC Egress Shaping
- HW OAM with RFC2544 Generator and Reflector to 10G
- Same Intel x86 Broadwell module (Medium and Large) as 3906
- SyncE & 1588v2 PTP
- Pluggable AC/DC Redundant Power  
Extended Temp -40 to 65°C



Flexible Module		
x86	CEM	Combo
Medium	16 x T1/E1	6x DS1/E1 + 4x DS3/E3 + 4x OC3/12 /STM1/4 or 1x OC48/STM16
Large		

NNI/UNI	UNI	UNI
6	2	2
1G/10G	100/1G	10/100/1G
SFP+	SFP	



# 3928 Platform

Cost-effective, high-volume service delivery



- **MPLS, advanced Ethernet, OAM & Zero Touch Provisioning**
- **Advanced QoS with Per-EVC Egress shaping**
- **HW OAM with 10G Service Activation Test engine**
- **Power supply & operating temperature variants:**
  - **Fixed Dual DC - Extended Temp -40 to 65°C**
  - **Fixed Dual AC – Commercial Temp 0 to 50°C**
- **SyncE & 1588 PTP (DC Model)**



NNI/UNI	UNI
4	8
1G/10G	1G
SFP+	SFP

# 3930 Service Delivery Switch

Universal Business/Wireless Demarcation

## Service Aware OS - SAOS:

- Virtual Switching Architecture
- E-LINE and E-LAN Services
- Flexible UNI Classification: EPL, EVPL, Hybrid
- Encapsulations: .802.1Q-in-Q, G.8032, MPLS
- Optional Synchronous Ethernet & IEEE 1588v2 (Stratum 3E)
- G.8032 Ethernet Ring Protection

## Sophisticated OAM capabilities

- IEEE 802.3ah link layer OAM
- IEEE 802.1ag Connectivity Fault Management
- ITU-T Y.1731 Performance Monitoring: Delay, Jitter, Loss
- IETF TWAMP Sender & Responder for L3 SLA Monitoring
- RFC 2544 Generator & Reflector for Performance Measurement
- Hardware Ethernet OAM

## Designed for Uncontrolled Environments

- -40C to +65C outside plant temperature range
- External Alarm inputs

## Redundant AC or DC power supplies

## Wire-speed L2 switching with 28 Gbps fabric



NNI/UNI	UNI
2	8
1G/10G	100/1G
SFP+	(8) SFP (4) RJ

# 3931 Service Delivery Switch

Weather-Proof Business & Wireless Backhaul

**Service Aware OS - SAOS:**

- Virtual Switching Architecture
- E-LINE and E-LAN Services
- Encapsulations: 802.1Q-in-Q, G.8032, MPLS
- Flexible UNI Classification: EPL, EVPL, Hybrid
- Optional Synchronous Ethernet & IEEE 1588v2 (Stratum 3E)
- G.8032 Ethernet Ring Protection

**Sophisticated OAM capabilities**

- IEEE 802.3ah link layer OAM
- IEEE 802.1ag Connectivity Fault Management
- ITU-T Y.1731 Performance Monitoring: Delay, Jitter, Loss
- IETF TWAMP Sender & Responder for L3 SLA Monitoring
- RFC 2544 Generator & Reflector for Performance Measurement
- Hardware Ethernet OAM

**Deployable into any location**

- Environmentally sealed package
- -40C to +65C temperature range
- Integrated protection for customer drops

**Redundant AC or DC power supplies**

- Universal DC (-48V, -24V, +24V) or AC (100V, 240V)

**Wire-speed L2 switching with 28 Gbps fabric**



Pole, H-Frame & Wall Mount

NNI/UNI	UNI	UNI
2	4	4
1G/10G	100/1G	10/100/1G
SFP+	SFP	RJ-45



# 3942 Service Delivery Switch

MDU/MTU Copper Demarcation

## Service Aware OS - SAOS:

- Virtual Switching Architecture
- MEF 2.0 E-LINE, E-LAN, E-TREE Services
- Flexible UNI Classification: EPL, EVPL, Hybrid
- Networking – 802.1Q-in-Q, G.8032, MPLS-TP

## Sophisticated OAM capabilities

- ITU-T Y.1731 Performance Monitoring: Delay, Jitter, Loss
- RFC 2544/Y.1564 Performance Generator & Reflector
- IEEE 802.3ah link layer OAM
- IEEE 802.1ag Connectivity Fault Management
- IETF TWAMP Sender & Responder for L3 SLA Monitoring
- Hardware Ethernet OAM

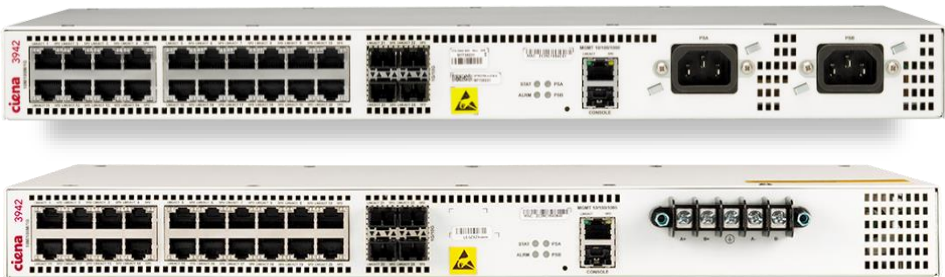
## Redundant Dual Fixed AC or DC power supplies

## Packaged for Controlled Environments

- 0C to +65C temperature range
- Rack-mount or Wall-mount Configuration

## Five 9s+ Reliability

## Wire-speed L2 switching with 60 Gbps fabric



NNI/UNI	UNI
4	20
1G/10G	10/100/1000M
SFP+	RJ-45

# 5142 Service Aggregation Switch

Premium 1G/10G Service Delivery/Aggregation

## Service Aware OS - SAOS:

- Virtual Switching Architecture
- MEF 2.0 E-LINE, E-LAN, E-TREE Services
- Flexible UNI Classification: EPL, EVPL, Hybrid
- Networking – 802.1Q-in-Q, G.8032, MPLS-TP

## Sophisticated OAM capabilities

- IEEE 802.1ag & ITU-T Y.1731;Hardware Ethernet OAM
- RFC 2544/Y.1564 Generator & Reflector
- IEEE 802.3ah link layer OAM
- IETF TWAMP Sender & Responder for L3 SLA Monitoring

## Stringent clocking/synchronization

- Stratum 3E accuracy
- Synchronization via BITS, 1588v2 or Synch-E
- External sync inputs/outputs (BITS, 10MHz, 1PPS, ToD)
- 1588v2 OC & BC

## Compact 1RU ETSI Form-Factor

-40C to +65C outside plant temperature

Redundant AC or DC power supplies

Wire-speed L2 switching with 60 Gbps fabric



NNI/UNI	UNI	Sync
4	20	External
10G/1G	1G/100M	BITS, 1pps, ToD, Freq.
SFP+/SFP	SFP	RJ45, mini coax



# 5144 10G Aggregation Platform

Delivers high capacity, low power in a compact footprint

## Powered by Ciena's Service Aware OS



### TELEMETRY / MANAGEMENT

- gRPC Streaming Telemetry
- Netconf/YANG, PCE Ready
- IPv4/IPv6 Mgmt
- Zero-Touch Provisioning (ZTP)



### SYNCHRONIZATION

- G.8275, IEEE 1588v2
- Sync-E, Frequency, 1PPS, GNSS



### SERVICES

- L3VPN, L2VPN
- 6PE/6VPE, SR-MPLS, BGP-LU
- Route Reflector
- 10GE Y.1564/RFC 2544 Engine, TWAMP



### BUFFERED LEAF/AGGREGATION

- Customizable Buffers, Low-Latency to Extra Deep
- Hierarchical Ingress Metering & Egress Shaping

Built-in dual power AC/DC

Front to Back Cooling

252mm depth



(20) 1G SFP

(8) 10G/1G SFP+

Mgmt & Timing



### POWER

- Dual Power Supplies
  - AC 100 Volts to 240 volts AC
  - DC -36 to -60 VDC



### SILICON

- 120G Qumran-UX Switch Fabric
- Scalable OAM/Statistics hardware assist engines



### THERMALS

- Temperature Hardened -40°C to +65°C

# 5150 Service Aggregation Switch

Extended Temperature High-Density Aggregation

Enables 1G → 10G aggregation in cabinets and uncontrolled environments

**Service Aware OS - SAOS:**

- Virtual Switching Architecture
- E-LINE and E-LAN Services
- Flexible NNI Encapsulation
- Flexible UNI Classification: EPL, EVPL, Hybrid
- Hardware Accelerated OAM

**Enhanced Resiliency via MPLS/H-VPLS**

- MPLS ping, Traceroute, backup LSPs, & MPLS FRR

**Sophisticated OAM capabilities**

- IEEE 802.3ah link layer OAM, IEEE 802.1ag Connectivity Fault Management
- ITU-T Y.1731 Performance Monitoring: Delay, Jitter, Loss
- IETF TWAMP Sender & Responder for L3 SLA Monitoring
- IEEE 1588v2, Synchronous Ethernet (hardware ready)

**Universal Deployment Options in 2RU ETSI Form-Factor**

- Redundant AC or Wide Range DC power supplies
- -40C to +65C outside plant temperature

**Wire-speed L2 switching with 88 Gbps fabric**



NNI/UNI	UNI
Up to 4	48
10G	100M/1G
XFP	SFP

# 5160 Service Aggregation Switch

High Density 10G Aggregation

## Service Aware OS - SAOS:

- Virtual Switching Architecture
- E-LINE and E-LAN Services
- Flexible UNI Classification: EPL, EVPL, Hybrid
- Encapsulations: 802.1Q-in-Q, G.8032, MPLS

## Enhanced Resiliency via G.8032, PBB-TE & MPLS/H-VPLS

- PBB-TE CFM, PBB-TE backup tunnels, PBB-TE dual homing
- MPLS ping, Traceroute, backup LSPs, & MPLS FRR

## Sophisticated OAM capabilities

- IEEE 802.3ah link layer OAM
- IEEE 802.1ag Connectivity Fault Management
- ITU-T Y.1731 performance monitoring: delay, jitter, loss
- IETF TWAMP sender & responder for L3 SLA monitoring
- RFC 2544 generator & reflector for performance measurement
- Hardware assisted Ethernet OAM

## Compact 1RU ETSI form-factor

## Redundant AC or DC power supplies

## -40C to +65C outside-plant temperature

## Wire-speed L2 switching with 240 Gbps fabric



NNI/UNI	Sync
24	External
1G/10G	BITS, 1pps, ToD, Freq.
SFP/SFP+	RJ45, mini coax

# 5162 Platform

Delivers high capacity, low power in a compact footprint

## Powered by Ciena's Service Aware OS



### TELEMETRY / MANAGEMENT

- gRPC Streaming Telemetry
- Netconf/YANG, PCE Ready
- IPv4/IPv6 Mgmt
- Zero-Touch Provisioning (ZTP)



### SYNCHRONIZATION

- G.8275, IEEE 1588v2
- Sync-E, BITS, Frequency, 1PPS



### SERVICES

- L3VPN, L2VPN
- 6PE/6VPE, SR-MPLS, BGP-LU
- Route Reflector
- 100GE Y.1564/RFC 2544 Reflector, TWAMP



### BUFFERED LEAF/AGGREGATION

- Customizable Buffers, Low-Latency to Extra Deep
- Hierarchical Ingress Metering & Egress Shaping

Pluggable dual power

Front to Back Cooling



(8) 25G/10G/1G SFP28

(32) 10G/1G SFP+

(2) 100G NNI QSFP28

Mgmt & Timing



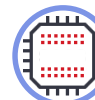
### COOLING

- (5) redundant fans, factory populated
- Field-replaceable
- No impact to operation upon single fan failure



### POWER

- Dual Power Modules (Field Replaceable)
  - AC 100 Volts to 240 volts AC
  - DC -36 to -60 VDC



### SILICON

- 300G Qumran-AX Switch Fabric
- Intel x86 CPU

# 5164 Network Slicing Router

*cost-effective 10GE/25GE to 100GE/200GE aggregation*

## Powered by Ciena's Service Aware OS



### TELEMETRY / MANAGEMENT

- gRPC Streaming Telemetry
- Netconf/YANG, PCE Ready
- IPv4/IPv6 Mgmt, Zero-Touch Provisioning



### SYNCHRONIZATION

- G.8275, IEEE 1588v2
- GNSS, Sync-E, Frequency, 1PPS



### SERVICES

- Ethernet, Flex-E/G.mtn
- L3VPN, L2VPN
- 6PE/6VPE, SR-MPLS, BGP-LU, EVPN
- Hard Slicing via Flex-E/MTN Path cross connection

**Built-in dual power AC/DC**

**Fixed fans**

**GNSS/Timing & Mgmt**



**(32) SFP28**  
**(25G/10G/1G)**

**(4) QSFP56/QSFP28**  
**(200G/100G)**



### BUFFERED LEAF/AGGREGATION

- Customizable Buffer Management
- Low-Latency to Extra Deep



### SILICON

- 800G Qumran2a Switch Fabric
- Quad-core ARM CPU



### THERMALS

- Industrial Temperature -40°C to +65°C



# 5166 Network Slicing Router

cost-effective 10GE/25GE to 100/200/**400GE** aggregation

## Powered by Ciena's Service Aware OS



### TELEMETRY / MANAGEMENT

- gRPC Streaming Telemetry
- Netconf/YANG, PCE Ready
- IPv4/IPv6 Mgmt, Zero-Touch Provisioning



### SYNCHRONIZATION

- G.8275, IEEE 1588v2
- GNSS, Sync-E, Frequency, 1PPS



### SERVICES

- Ethernet, Flex-E/G.mtn
- L3VPN, L2VPN
- 6PE/6VPE, SR-MPLS, BGP-LU, EVPN
- Hard Slicing via Flex-E/MTN Path cross connection

Built-in dual power AC/DC

Fixed fans

GNSS/Timing & Mgmt



(32) SFP28  
(25G/10G/1G)

(2) QSFP-DD  
(100G/200G/400G)



### BUFFERED LEAF/AGGREGATION

- Customizable Buffer Management
- Low-Latency to Extra Deep



### SILICON

- 800G Qumran2a Switch Fabric
- Quad-core ARM CPU



### THERMALS

- Industrial Temperature -40°C to +65°C



# 5168 5G xHaul Slicing Router

CPRI, RoE and eCPRI Fronthaul Services with cost-effective 10GE/25GE to 100GE/200GE aggregation

## Powered by Ciena's Service Aware OS



### TELEMETRY / MANAGEMENT

- gRPC Streaming Telemetry
- Netconf/YANG, PCE Ready
- IPv4/IPv6 Mgmt, Zero-Touch Provisioning



### SYNCHRONIZATION

- G.8275, IEEE 1588v2
- GNSS, Sync-E, 1PPS



### SERVICES

- TSN, Ethernet, Flex-E/G.mtn
- L3VPN, L2VPN
- 6PE/6VPE, SR-MPLS, BGP-LU, EVPN
- Hard Slicing via Flex-E/SCL cross connection



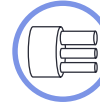
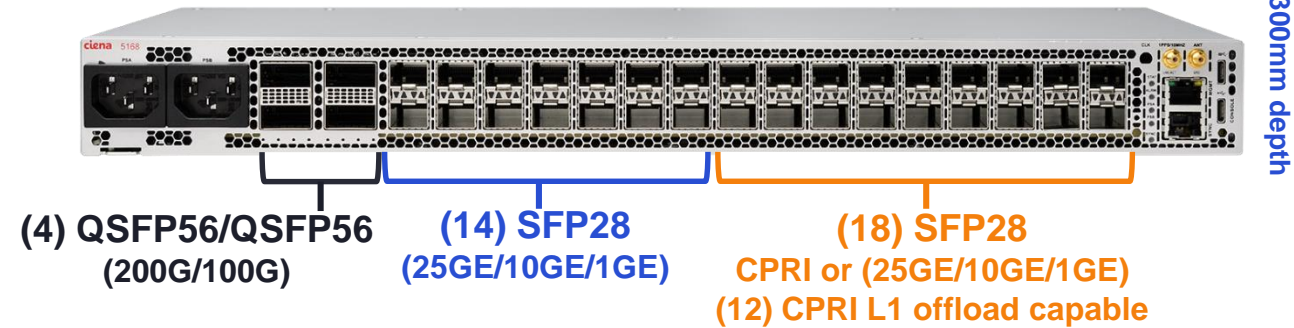
### BUFFERED LEAF/AGGREGATION

- Customizable Buffer Management
- Low-Latency to Extra Deep

Built-in dual power AC/DC

Fixed Fans

GNSS/Timing & Mgmt.



### FRONTHAUL SERVICES

- CPRI options 3, 5, 7, 8 support
- eCPRI options 7 (FD) and 8 (TD) support
- ROE mapping
  - Structure-agnostic, structure-aware
- CPRI to eCPRI interworking (IWF)
- CPRI to ORAN including L1 Offload processing



### SILICON

- 800G Qumran2a Switch Fabric
- CPRI/RoE/eCPRI Fronthaul Processor



### THERMALS

- Industrial Temperature -40°C to +65°C

# 5170 Platform

Delivers high capacity, low power in a compact footprint

## Powered by Ciena's Service Aware OS



### TELEMETRY / MANAGEMENT

- gRPC Streaming Telemetry
- Netconf/YANG, PCE Ready
- IPv4/IPv6 Mgmt
- Zero-Touch Provisioning (ZTP)



### SYNCHRONIZATION

- G.8275, IEEE 1588v2
- GNSS, Sync-E, BITS, Frequency, 1PPS



### SERVICES

- L3VPN, L2VPN
- 6PE/6VPE, SR-MPLS, BGP-LU
- Route Reflector
- 100GE Y.1564/RFC 2544 Engine, TWAMP

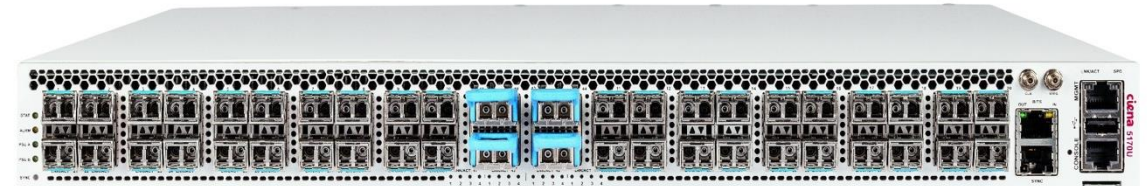


### BUFFERED LEAF/AGGREGATION

- Customizable Buffers, Low-Latency to Extra Deep
- Hierarchical Ingress Metering & Egress Shaping

Pluggable dual power

Front to Back Cooling



560mm depth

(40) 10G/1G SFP28+

(4) 100G NNI QSFP28

Mgmt & Timing



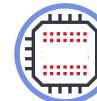
### COOLING

- (5) redundant fans, factory populated
- Field-replaceable
- No impact to operation upon single fan failure



### POWER

- Dual Power Modules (Field Replaceable)
  - AC 100 Volts to 240 volts AC
  - DC -36 to -60 VDC



### SILICON

- 800G Qumran-MX Switch Fabric, Intel x86 CPU
- Scalable OAM/Statistics hardware assist engines

# 5171 Platform

Delivers high capacity, low power in a compact footprint

## Powered by Ciena's Service Aware OS



### TELEMETRY / MANAGEMENT

- gRPC Streaming Telemetry
- Netconf/YANG, PCE Ready
- IPv4/IPv6 Mgmt, Zero-Touch Provisioning



### SYNCHRONIZATION

- G.8275, IEEE 1588v2
- GNSS, Sync-E, BITS, Frequency, 1PPS



### SERVICES

- L3VPN, L2VPN
- 6PE/6VPE, SR-MPLS, BGP-LU
- Route Reflector
- 100GE Y.1564/RFC 2544 Engine, TWAMP



### BUFFERED LEAF/AGGREGATION

- Customizable Buffers, Low-Latency to Extra Deep
- Hierarchical Ingress Metering & Egress Shaping

Pluggable dual power

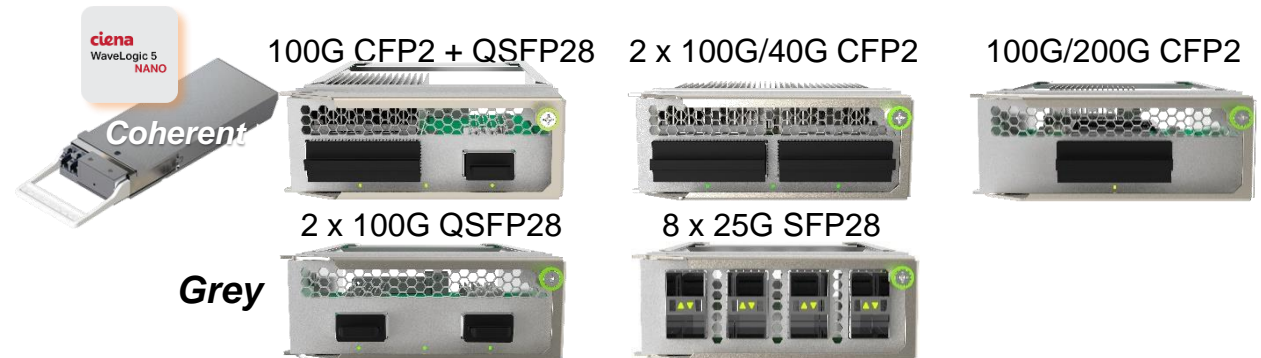
(2) 200G NNI Modules



Mgmt & Timing

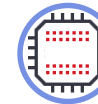
(36) 10G/1G SFP+

(4) 25G/10G/1G SFP28+



### WAVELOGIC

- WaveLogic Coherent Pluggables CFP2 DCO



### SILICON

- 800G Qumran-MX Switch Fabric, Intel x86 CPU
- Scalable OAM/Statistics hardware assist engines

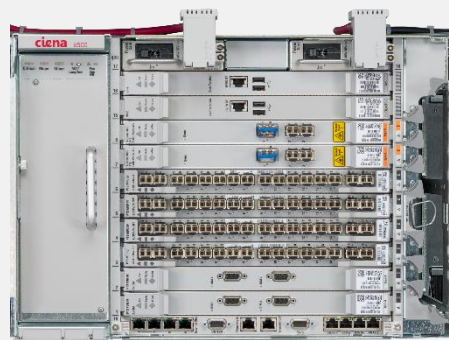


### THERMALS

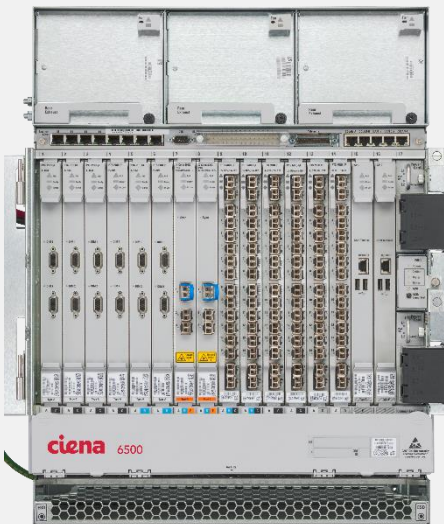
- Temperature Hardened -40°C to +65°C

# 6500 Packet Transport System: Circuit Emulation and Packet Services

## 6500 PTS



6500-S8



6500-S14





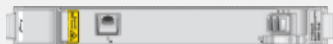




## Unique Advantages of the 6500 Packet Transport System (PTS)

Up to **5x lower power** and **10x space savings** using 1:n PDH protection for 3/1 DACS application.

Up to **4x more TDM circuit emulation capacity** than competition, with unrestricted 20G capacity per slot.

Delivers **next-gen MPLS transport and switching** with control plane, seamless MPLS & segment routing.

## New 6500 PTS Modules

Fabric	 X-Conn 800G PTS 1xQSFP28/2xSFP+	Ethernet	 PTS ETH I/F 40G 16 Port (4xSFP+/16xCSFP)	MRO Multi-Rate Optical	 PTS MRO I/F 16xSFP
	 PTS ETH I/F 100G 12 Port (2xQSFP28/10xSFP+)		 OTS WL3n Enh 1xQSFP28		
PDH	 PTS PDH I/F 2xDIM	 84xDS1/E1 DIM	 24xDS3/E3/EC1 DIM	DWDM	
	 PTS PDH I/F 10xDIM 1:N				

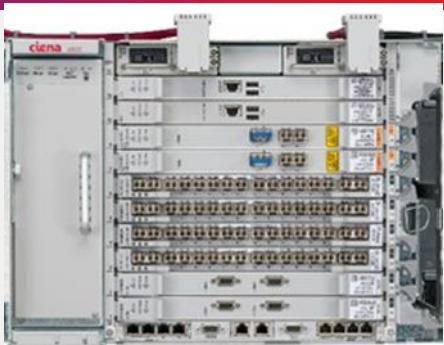


# 6500 Packet Transport System (PTS): Packet Services and Circuit Emulation

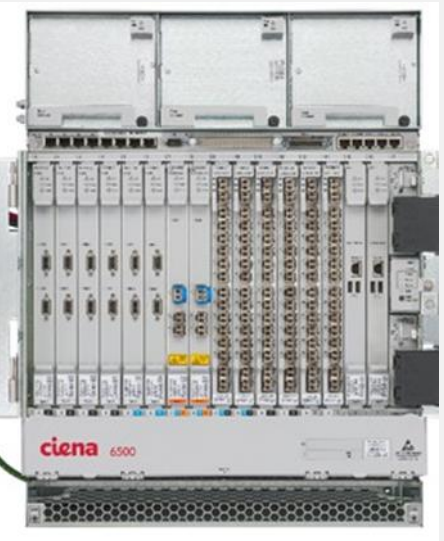
Built on a solid 6500 S-Series foundation

## Chassis

Existing 6500 S-series



6500-S8



6500-S14

## Fabric and Ethernet Circuit Packs

### Fabric

#### NTK614AA

800G packet switch with mesh interface to mate

- 480G throughput at 64-byte frames
- NPU based packet assist

1x100G/40G or 2x10G uplink ports

- QSFP28/+: 100GE/OTU4(100GE) or 40GE/OTU3(40GE)
- SFP+: 2x10GE/2xOTU2/2e(10GE)

Quad core compute complex

- SAOS, MPLS control plane

PTP Synchronization support

- IEEE1588v2 GM, BC, OC



X-Conn 800G PTS  
1xQSFP28/2xSFP+

### Ethernet

#### NTK695AA

4xSFP+

- 10GE SFP+ (4 ports)

16xSFP/CSFP

- 10/100BaseT SFP (16 ports)
- 100FX SFP (16 ports)
- GE SFP (16 ports)
- GE CSFP (32 ports)



PTS ETH I/F 40G 16 Port  
(4xSFP+/16xCSFP)

Future

#### NTK696AA

1x100GE or 2x40GE or 10x10GE client ports

- QSFP28: 1x100GE (1 port only)
- QSFP+: 1x40GE or 4x10GE (2 ports)
- SFP+: 10x10GE (10 ports)

100G bandwidth supported in slots 3,4,5 and 6 only

- 1x40GE or 4x10GE supported in all other slots



PTS ETH I/F 100G 12 Port  
(2xQSFP28/10xSFP+)

Future

# 6500 Packet Transport System (PTS): Packet Services and Circuit Emulation

Built on a solid 6500 S-Series foundation

## Circuit Emulation

### Optical/ Ethernet Circuit Pack



PTS MRO I/F 2xSFP+/14xSFP

#### NTK691AA

Sixteen independently configurable ports:

- OC-3/12/STM-1/4 (maximum 16 ports)
- OC-48/STM-16 (maximum 8 ports)
- OC-192/STM-64 (maximum 2 ports)
- 100FX/GE/ (maximum 16 ports)
- 10/100/1000BaseT support via appropriate SFP
- 10GE (maximum 2 ports)

20G TDM HO, LO or PDH Circuit Emulation

- HO: STS-1/3c/12c/48c/VC4/VC4-4c/VC4-16c
- LO: VT-1.5/2/VC11/12
- PDH: DS3, DS3 M13, DS1, E1, E3

60G HO TDM XC

- 1+1 APS/MSP
- UPSR/SNCP

### PDH Modules

#### NTK604AA



84xDS1/E1 DIM

#### NTK604BA



24xDS3/E3/EC1 DIM

Distributed I/O Modules (DIM) for:

- 84x DS1 or E1 signals
- 24x DS3, E3 or EC1 signals

2RU in height, 19" rack mountable, 7" depth

Passively cooled and powered from PTS PDH I/F card

Mountable for front or rear copper access with DIM link to host shelf routed through the appropriated side

DS1/ E1: 110Ω copper interface (100Ω DS1, 120Ω E1)

- 6x 64-pin Telco (Champ) Female connectors
- Left and right routing with same right-angled cables

DS3/ E3: 75-ohm interface

- 48 Mini-BNC connectors (24 Tx, 24 Rx)

Configurable Line Build Out (LBO) and signal encoding

### PDH Circuit Packs

#### NTK690AA

168x DS1 or E1 signals (selectable per LIU)

48x DS3, E3 or EC1 (selectable per LIU)

DS1: MEF8, SAToP, CESoPSN (DS0)

E1: MEF8, SAToP, CESoPSN (DS0)

DS3/E3: MEF8, SAToP

EC1 (STS-1, VT-n): MEF3, CEP

Unprotected or 1:1 protected PDH configurations

PTS PDH I/F 2xDIM

#### NTK690PA

Supports up to a maximum of 5 working cards

- Reuse PTS PDH I/F 2xDIM as working card
- Reuse 84xDS1/E1 DIM and 24xDS3/E3/EC1 DIM

DS1: MEF8, SAToP, CESoPSN (DS0)

E1: MEF8, SAToP, CESoPSN (DS0)

DS3/E3: MEF8, SAToP

EC1 (STS-1, VT-n): MEF3, CEP

PTS PDH I/F 10xDIM 1:N Protection



# 8180 Coherent Networking Platform

Delivers high capacity, low power in a compact footprint

## Powered by Ciena's Service Aware OS



### TELEMETRY / MANAGEMENT

- gRPC Streaming Telemetry
- Netconf/YANG
- IPv4/IPv6 Mgmt, Zero-Touch Provisioning



### SYNCHRONIZATION

- G.8275, IEEE 1588v2
- Sync-E, BITS, Frequency, 1PPS



### WAVESERVER AI PEERING, BANDWIDTH ON DEMAND

- Integrated optical test set
- Active Optical Cable (FEC on/off)
- WaveLogic Capacity in 100G increments



### OPTICAL PROVISIONING

- Flex grid channel provisioning
- Multi-layer provisioning via single interface



### MULTI-TERABIT SPINE

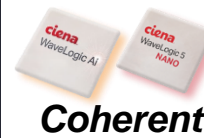
- Geographically dispersed deployments

(32) QSFP28/QSFP+

Mgmt & Timing Ports



## (4) 800G Field Replaceable Units (FRUs)

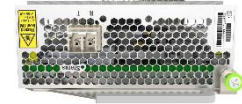
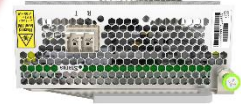


1 x 100G-400G

1 x 200G-800G

2 x 100G-400G

2-4 x 100G-200G



Grey



### WAVELOGIC

- WaveLogic tunable capacity up to 800G



### SILICON

- 6.4Tbps Tomahawk3 Switch Fabric
- Intel x86 CPU



### THERMALS

- Commercial Temperature 0 to +40°C

# 8700 Packetwave

## Multi-Terabit Modular Switch



	4-Slot	10-Slot
Rack Units	6	10
Switching Capacity	800G → 2.7T	2T → 6.8T
Slot Capacity	200G → 680G	200G → 680G
Common Cards	3	3
Line Modules	4	10
10GbE	80 → 130	200 → 300
1GbE	80 → 130	200 → 300
100GbE	8 → 24	20 → 60
40GbE	8 → 32	20 → 80
100G DWDM (WaveLogic 3)	8	20



Transforming how Metro Networks are designed, deployed, and managed

# 8700 Packet Service Line Modules (PSLM)



**PSLM-200-20**

Ports	Type
20	10G / 1G SFP/SFP+



**PSLM-200-2**

Ports	Type
2	100G / 40G CFP



**PSLM-200-11**

Ports	Type
10	10G / 1G SFP+/SFP
1	100G QSFP28



**PSLM-400-31**

Ports	Type
30	10G / 1G SFP+/SFP
1	100G QSFP28



**PSLM-680-8**

Ports	Type
6	40G/100G QSFP+/QSFP28
2	40G QSFP+

# 8700 Coherent Service Line Module (CSLM)



**CSLM-200-2**

- Full 200GbE switch fabric access
- 200G Hardware based packet processing
- 2 x 100GbE fixed LC-based optics
- Hardware based packet OAM
- OTU-4 wrapped, coherent 100G tunable DWDM
- Hitless hot swappable line module

2 x 100G WaveLogic 3 Nano DWDM

50GHz, 100GHz, gridless

WaveLogic Photonics compatible

120km unamplified, 1000km amplified

Compatible with 4-slot and 10-slot chassis

No stranded capacity; no loss of 100GE density

Combining the best of packet switching, coherent 100G DWDM, and WaveLogic Photonics

# TDM over Packet

Ciena's TDM SFP Family



Part Number	Rate	Description	Channelization
XCVR-CEP001	OC-3 STM-1	Virtual Container over Packet (VCoP) SFP	STS-1/ STS-3c
XCVR-CEP002	OC-3/12 STM-1/STM-4	Virtual Container over Packet (VCoP) SFP	STS-1/STS-3c STS-12c
XCVR-CEP003	DS3	Virtual Container over Packet (VCoP) SFP	STS-1
XCVR-GES101	STM-1	Channelized SONET/SDH over Packet SFP	E1
XCVR-TDM2GE	E1	Transparent PDH over Packet SFP	E1
XCVR-TDM4GE*	DS1	Transparent PDH over Packet SFP	DS1

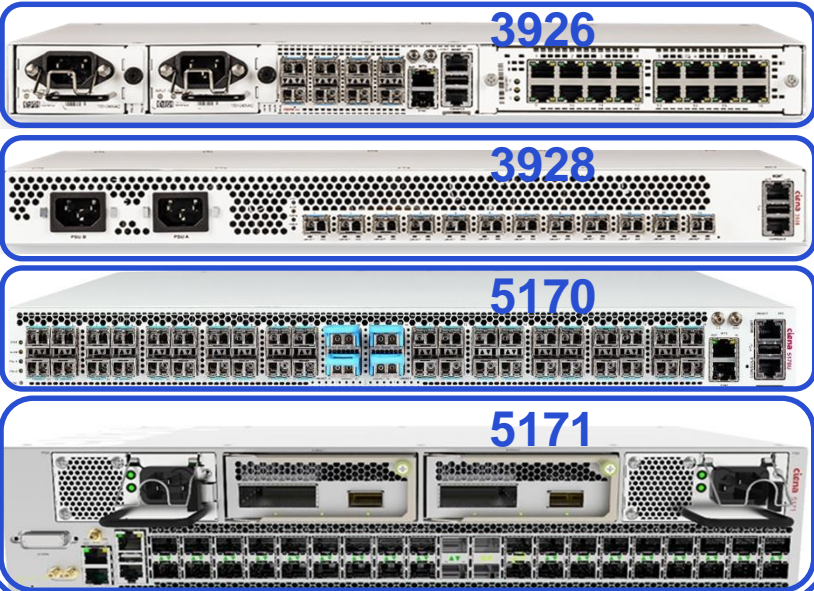
Available on  
• 3904• 3905• 3926• 3928• 3930-930 • 3932• 5142• 5160



# Ciena Platforms that support Adaptive IP

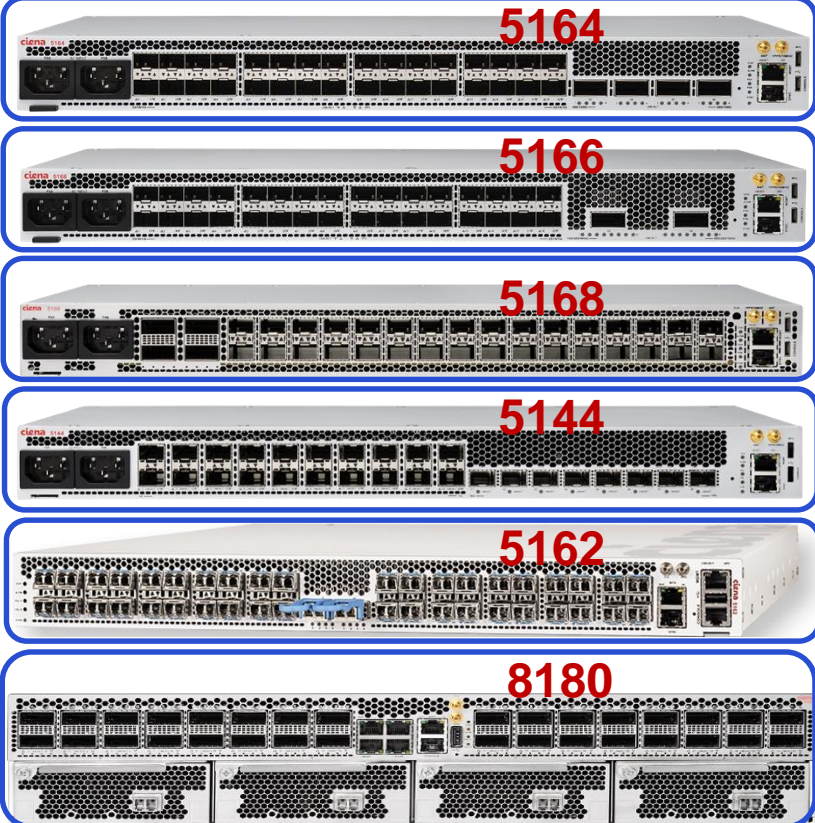


## SAOS 10.x Option



## SAOS 10.x Native

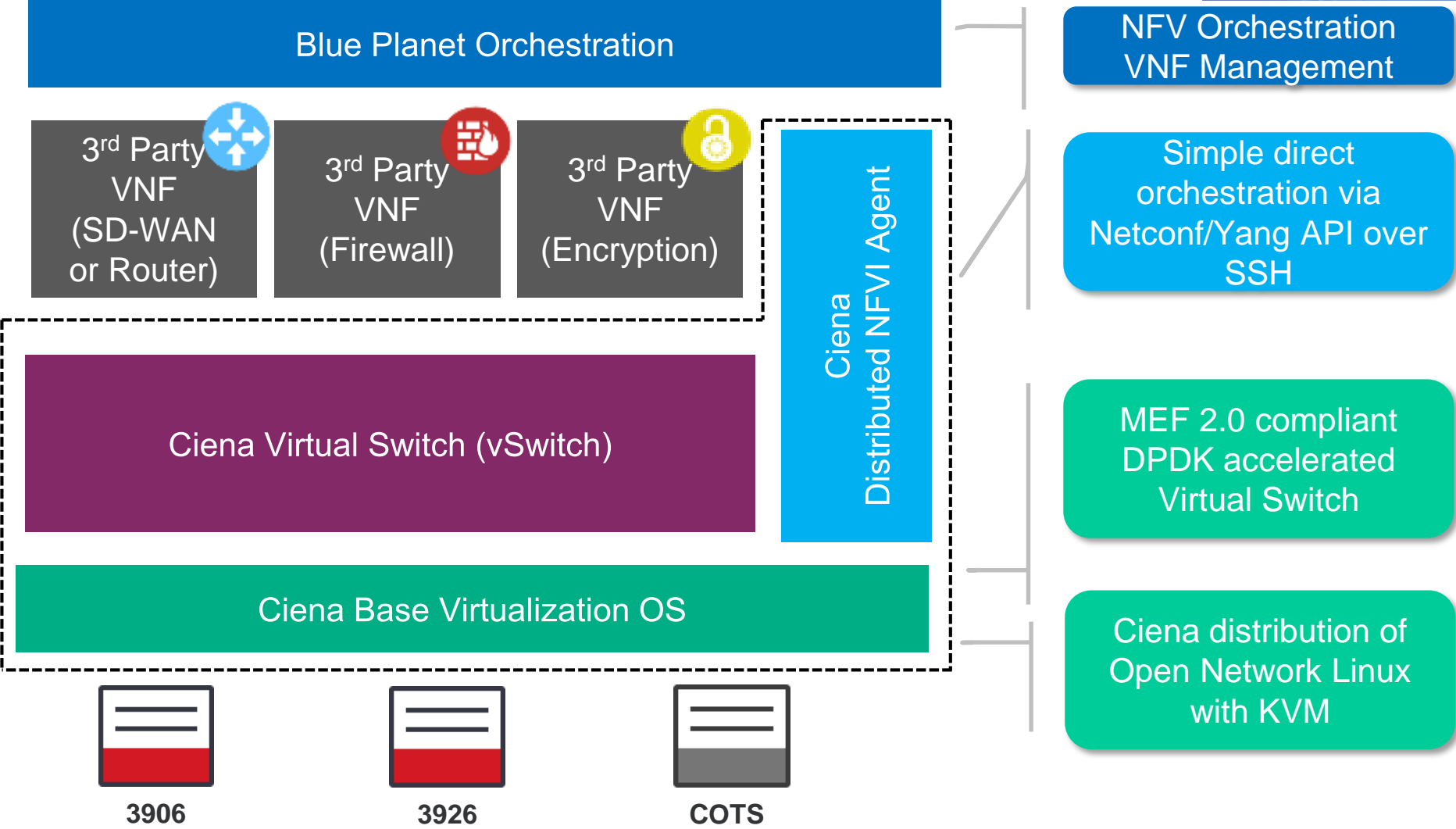
### D-NFVI





# Ciena D-NFV Solution

CPE in a Virtual Form Factor



# Ciena Packet Platform Summary

Model	NNI/UNI Ports	UNI Ports	Total Gbps	Power	Form Factor	Target Markets	Avail
<b>3902</b>	(1) 1G SFP	(1) 10/100/1000M RJ45	2	(1) External Universal AC	Plastic Clamshell	Business	GA
<b>3903</b>	(2) 100M/1G SFP	(1) 100M/1G SFP/RJ45	3	(2) Front Fixed AC or DC	1U, ETSI	Business	GA
<b>3903x</b>	(2) 100M/1G SFP	(1) 100M/1G SFP/RJ45	3	(1) External Universal AC	Plastic Clamshell	Business	GA
<b>3904</b>	(2) 100M/1G SFP	(2) 100M/1G SFP/RJ45	4	(2) Front Fixed AC or DC	1U, ETSI	Business, Indoor small cell	GA
<b>3905</b>	(2) 100M/1G SFP	(2) 100M/1G SFP/RJ45, PoE	4	(1) Fixed AC, DC, Cable AC	Outdoor	Business, small cell	GA
<b>3906</b>	(2) 100M/1G SFP	(2) 100M/1G SFP/RJ45 (2) 10/100/1000M RJ45	6	(2) Front Fixed AC (1) Front Fixed AC	1U, ETSI Module Slot	Business	GA
<b>3916</b>	(2) 100M/1G SFP	(2) 100M/1G SFP + (2) 100M/1G SFP/RJ45	6	(2) Front Fixed AC (1) Front Fixed AC (1) Front Fixed DC	1U ETSI	Res, Business, Transport	GA
<b>3926</b>	(6) 10G/1G SFP+	(2) 100M/1G SFP	82	(2) Front Plug AC or DC	1U, ETSI Module Slot	MBH, Business	GA
<b>3928</b>	(4) 10G/1G SFP+	(4) 100M/1G SFP (4) 1G SFP	48	(2) Front Fixed AC or DC	1U ETSI	MBH, Business	GA
<b>3930</b>	(2) 1G/10G SFP+	(4) 100M/1G SFP + (4) 100M/1G SFP/RJ45	28	(2) Front Plug AC or DC	1U ETSI	MBH, Business	GA
<b>3931</b>	(2) 1G/10G SFP+	(4) 100M/1G SFP + (4) 10/100/1000 RJ45	28	(2) AC or DC Option	Outdoor	MBH	GA
<b>3942</b>	(4) 1G/10G SFP+	(20) 10/100/1000 RJ45	60	(2) Front Plug AC or DC	1U ETSI	MDU, Business	GA
<b>5142</b>	(4) 10G/1G SFP+	(20) 100M/1G SFP	60	(2) Front Plug AC or DC	1U ETSI	Aggregation	GA
<b>5144</b>	(28) 1G + (8) 10G	(29) 1G + (8) 10G	120	2) Front Plug AC or DC	1U ETSI	Aggregation	GA
<b>5150</b>	(2) Dual 10G XFP Option Slots	(48) 100M/1G SFP	88	(2) Front Plug AC or DC	2U ETSI	Aggregation	GA
<b>5160</b>	24 1/10G SFP+	(24) 10G/1G SFP+	240	(2) Front Plug AC or DC	1U ETSI	Aggregation	GA
<b>5162</b>	(2) 100G QSFP28 / 40G QSFP+	(40) 10G/1G SFP+	300	(2) Rear Plug AC or DC (2) Front fixed DC	1U ETSI 1U ETSI	Aggregation, WB	GA
<b>5164</b>	(32) 1G/10G/25G + (4) 100G/200G	(32) 1G/10G/25G + (4) 100G/200G	800	(2) Front Plug AC or DC	1U ETSI	Aggregation, xHaul	3QFY20
<b>5166</b>	(32) 1G/10G/25G + (2) 100G/200G/400G	(32) 1G/10G/25G + (2) 100G/200G/400G	800	(2) Front Plug AC or DC	1U ETSI	Aggregation, xHaul	3QFY20
<b>5168</b>	(32) 1G/10G/25G + (4) 100G/200G / (14) 1G/10G/25G + (18) CPRI + (4) 100G/200G	(32) 1G/10G/25G + (4) 100G/200G / (14) 1G/10G/25G + (18) CPRI + (4) 100G/200G	800	(2) Front Plug AC or DC	1U ETSI	Aggregation, xHaul	4QCY20
<b>5170</b>	(4) 100G QSFP28 / 40G QSFP+	(40) 10G/1G SFP+	800	(2) Rear Plug AC or DC	1U ETSI	Aggregation, 100G NTE	GA
<b>5171</b>	(2) 200G Module Slots, 2xQSFP28, 1xQSFP28+1xCFP2	(4) 25G/10G/1G SFP28 (36) 10G/1G SFP+	800	(2) Front Plug AC or DC	2U ETSI	Aggregation, 100G NTE	GA
<b>8180</b>	(4) 800G Module Slots, 400G WLAI Sled	(32) 100G/40G QSFP28	6.4T	(2) Front Plug AC or DC	2U ETSI	Aggregation, 100G NTE	GA
<b>8700</b>	(20) 1G/10G SFP+ , (2) 40G/100G CFP, (1) 100G QSFP28/40G QSFP+ & (10) 10G/1G SFP+ modules		800/2T	(2 or 4) Rear Plug AC or DC	6U or 10U 4 or 10 slot	Aggregation	GA

# Where can I find out more?



Have questions? We have answers





**Thank You**